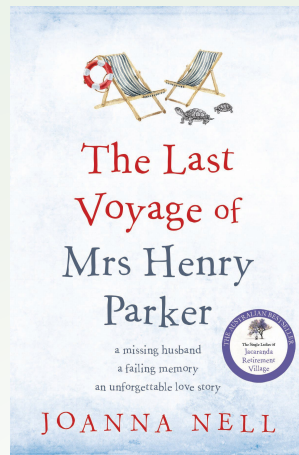


# BOOK CLUB QUESTIONS

## THE LAST VOYAGE OF MRS HENRY PARKER



1. Is Evelyn a reliable narrator? At what point in the novel did you become aware that Evelyn's memory was impaired and did this change your perception of her as a character?
2. What does Evelyn's word perfect recall of *The Rime of The Ancient Mariner* and passages from Florence Nightingale's book *Notes on Nursing* tell us about her as a character, and about the nature of memory loss in dementia?
3. The young Evelyn gave up her dream of becoming a midwife to marry Dr. Henry Parker. What do you think of her decision and how have societal attitudes changed since 1953?
4. What impact did meeting Mrs. Henry Parker have on Frank and Nola?
5. Do you think Evelyn and Henry were well matched as a married couple?
6. How does living aboard a cruise ship in later life compare to the alternative of living in a retirement village or aged care facility? What was Evelyn's attitude to The Dreadnought Home For Retired Seafarers?
7. How did the ship's crew react to Evelyn's confusion?
8. Were you surprised by the revelations at the end of the book?
9. Has seeing the world through the eyes of a person with dementia changed the way you think about this condition?
10. What message will you take away from reading this book?